



Chelsea Cloisters, Chelsea  
London SW3

GARTONJONES.COM



# Chelsea Cloisters, Chelsea London, SW3

## £410 Per Week

GARTON JONES.COM

8 Gatliff Road  
Grosvenor  
Waterside  
Chelsea  
London  
SW1W 8DP

Lettings:  
+44 (0) 20 7730 5007  
gws@gartonjones.com  
www.gartonjones.com

A refurbished studio apartment of approx. 213sq.ft (19.8sq.m) to rent on the 1st floor (with lift) of Chelsea Cloisters, a popular development located on Sloane Avenue in Chelsea. This furnished apartment has wood flooring, a balcony, kitchen, bathroom and the hot water and heating charges are included in the weekly rent. Chelsea Cloisters is a secure development with easy access to all of the amenities of the Kings Road, Fulham Road and South Kensington.

Heating and hot water included.

\* Please note the furniture may differ or not be included to that shown in current photos.

EPC Rating: C

Council Tax: Royal Borough of Kensington and Chelsea (band C).

12 month minimum term. 5 week deposit required.

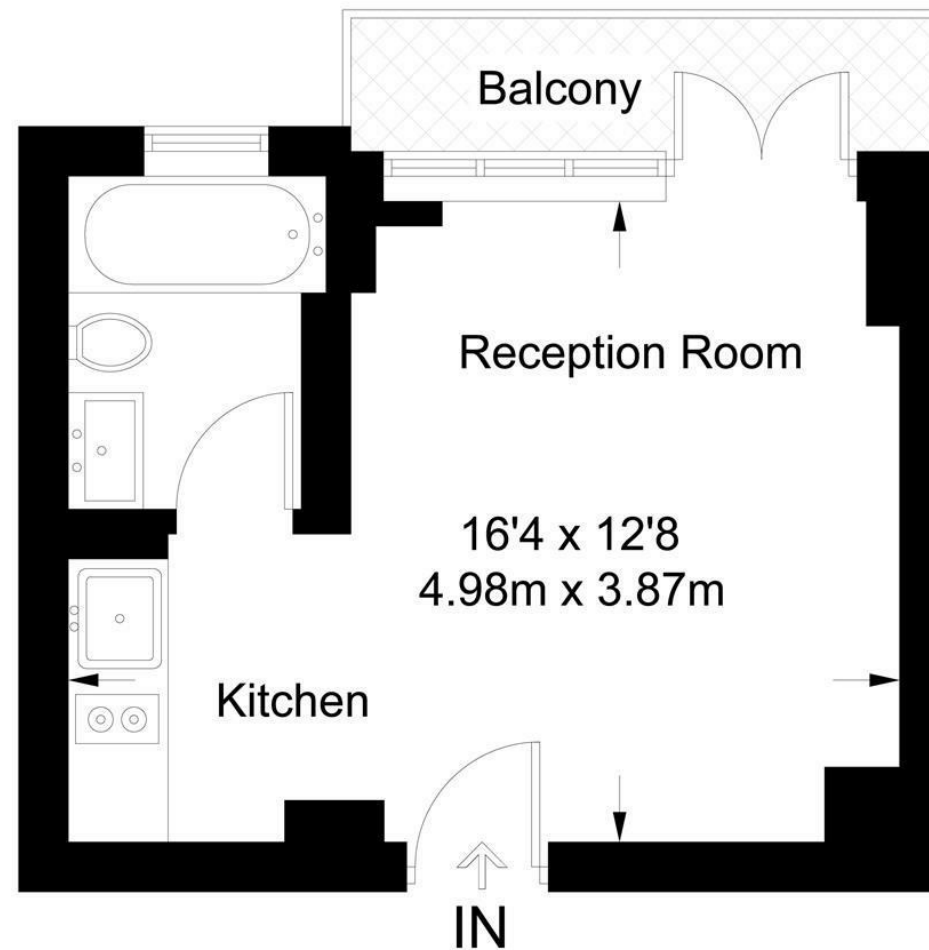
To check broadband and mobile phone coverage, please visit Ofcom: [ofcom.org.uk/phones-telecoms-and-internet/advice-for-consumers/advice/ofcom-checker](http://ofcom.org.uk/phones-telecoms-and-internet/advice-for-consumers/advice/ofcom-checker)

- 213sq.ft (19.8sq.m)
- Refurbished Studio Apartment
- Separate Kitchen
- Modern Bathroom
- Wood Flooring
- Balcony
- 24 Hour Concierge
- Hot Water & Heating Charges
- Close to Local Amenities Including Shops, R
- Walking Distance to the Transport Links of Sloane Square & Victoria Station



**Chelsea Cloisters**

Approximate Gross Internal Area = 213 sq ft / 19.8 sq m



**First Floor**



